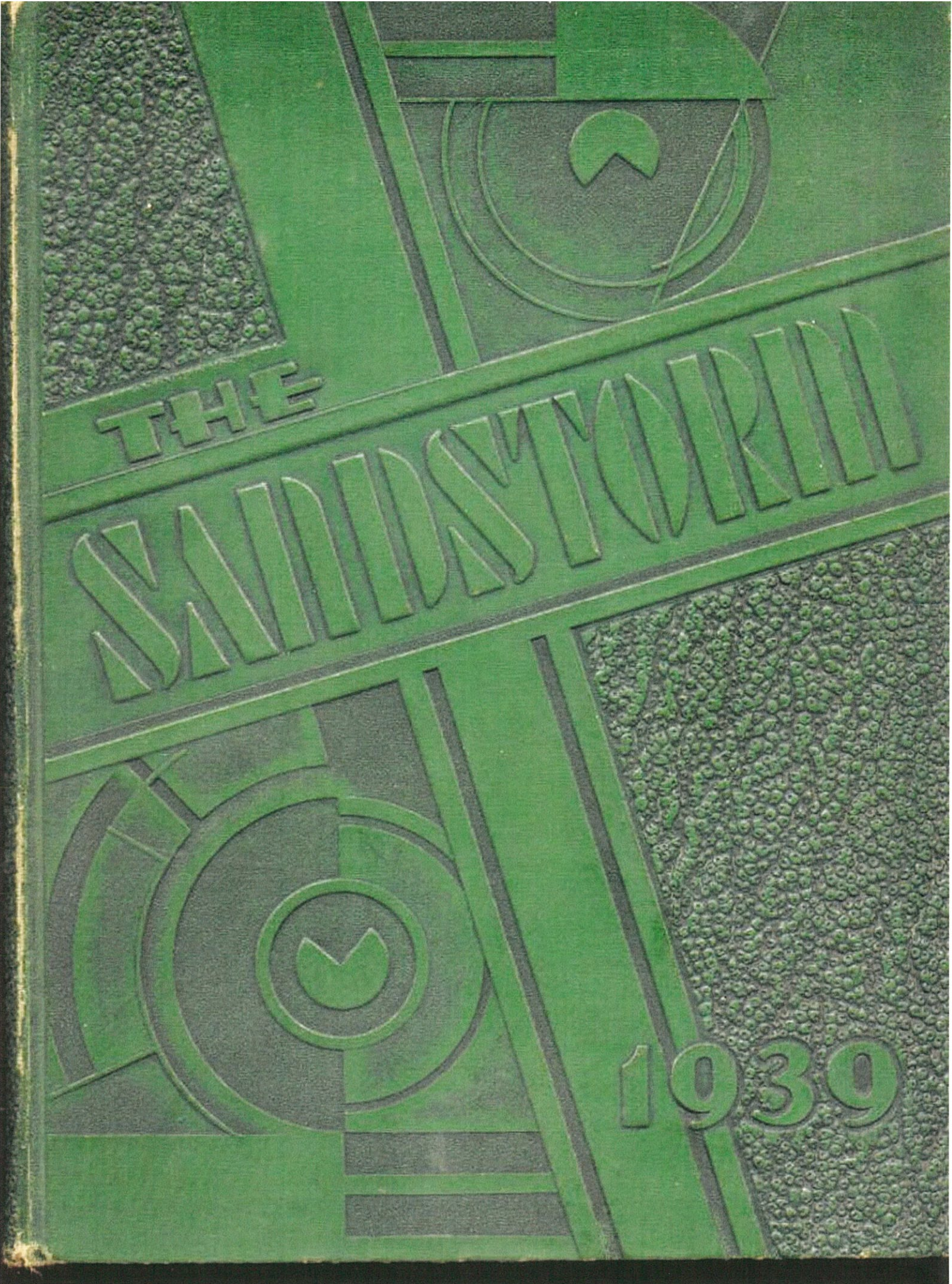


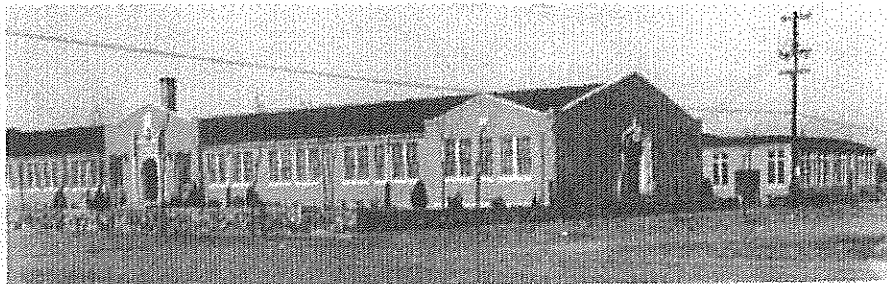
THE

SANDWICH TOWN

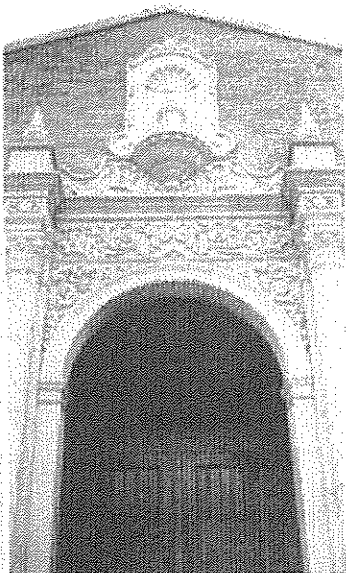
1939



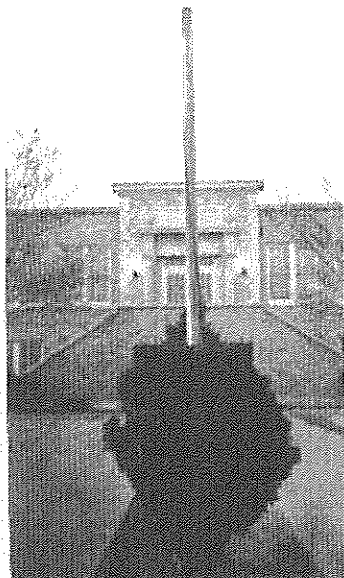
2-
to
year



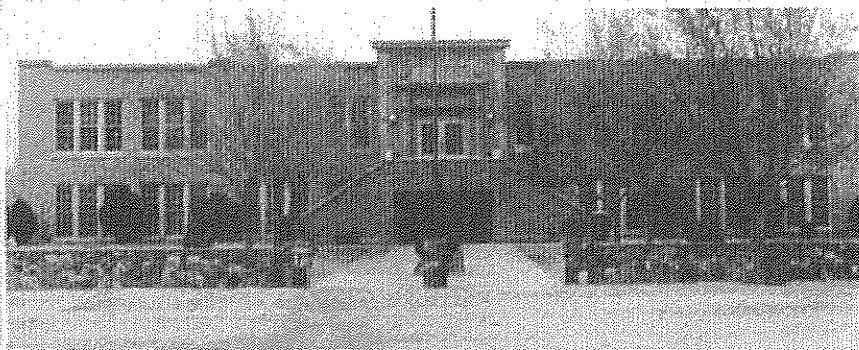
High School



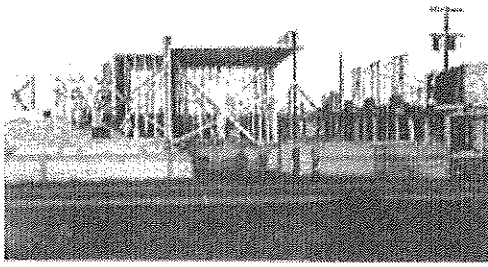
High School Entrance



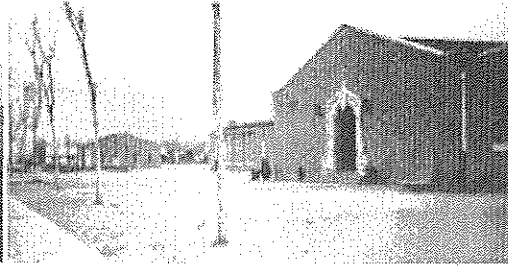
Grade School Entrance



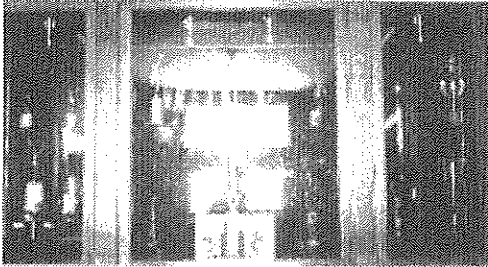
Grade School



FIELD HOUSE UNDER CONSTRUCTION



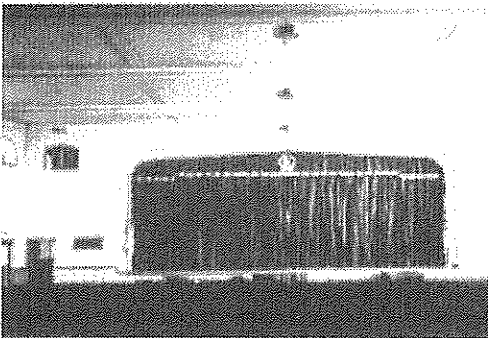
SIDE VIEW OF HIGH SCHOOL



PROPER CASE



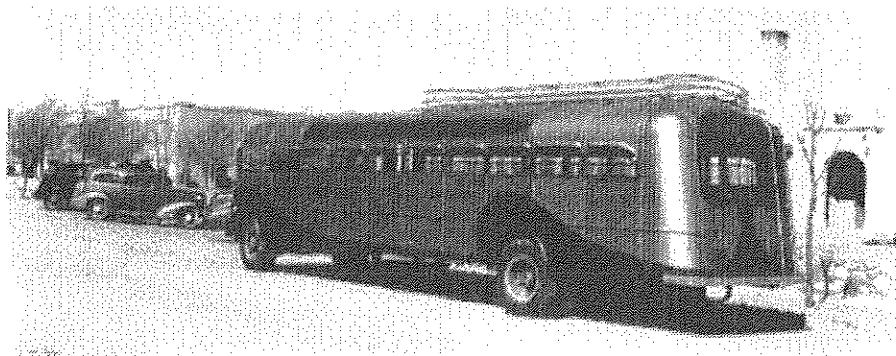
CORRIDOR



HIGH SCHOOL AUDITORIUM



CLASS ROOM IN THE HONORABLE DEPARTMENT



HERBIE SCHOOL BUS